

Cadogan Villas Kidbrooke Grove **£2.95 Million Freehold**

Stunning and immaculate family home located on this sought after tree lined cul de sac. This was the show house of 4 prestigious homes built by Octagon to the highest specification with period design and detail that blends into the surrounding streetscape. Features include hand built solid walnut bespoke Kitchen, three luxurious Bathrooms, two Cloakrooms and an integrated surround sound media system to three floors. Occupying an excellent position Kidbrooke Grove is within easy reach of Blackheath Village, The open Heath and Greenwich Park. Blackheath Mainline Railway Station serves the City and West End and one stop connection for DLR to Canary Wharf. The area is well served with excellent schools in the both the public and private sectors and all primaries being an easy walk away.

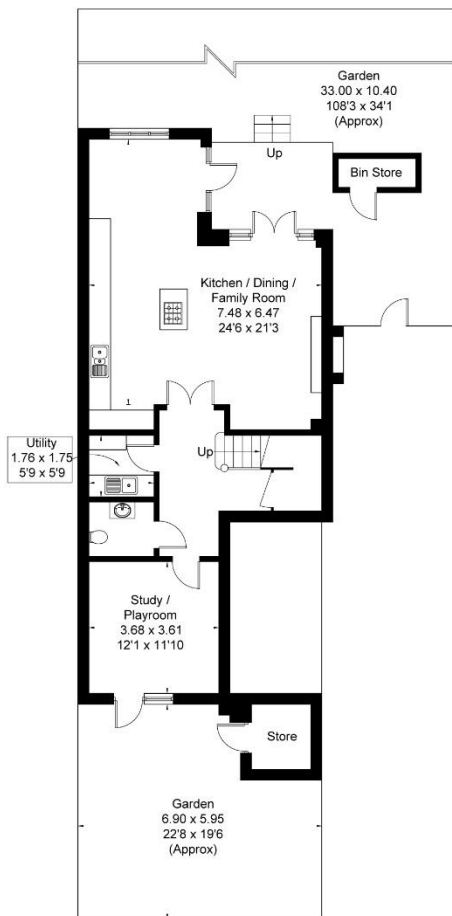
KERSHAW'S

The light filled space is beautifully designed and laid out with over 3200 sq.ft. of well-planned interior design. Welcoming deep Entrance Porch opening to spacious Reception Hall with coat cupboard. Few steps down leads to the impressive open space of the Kitchen Dining and Family Room with doors opening onto the terrace and garden beyond. Also to this floor is the children's Playroom with double doors leading out to safe enclosed Courtyard, Laundry and Cloakroom. The upper Ground Floor has a Drawing Room with Terrace Overlooking the Rear Garden and a Second Large Sitting Room. The First Floor has the Master fitted Bedroom and large Luxury En-Suite Bathroom, further double Bedroom and Family Bathroom. The top floor having two double Bedrooms and third Bathroom. To the half Landing is Bedroom five or Study making this a quiet place to work plus additional Cloakroom. There is a Garage En-Bloc then (an additional 301 sq.ft of space) and a superb Garden of over 100ft.

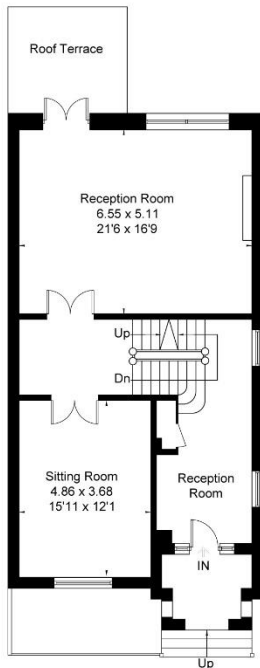


KERSHAW'S

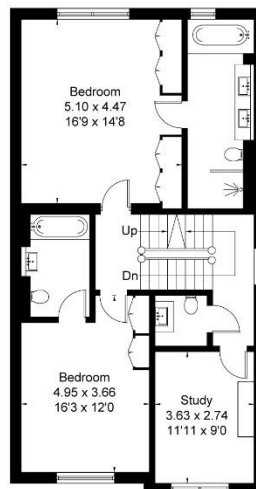
Approximate Floor Area = 298.3 sq m / 3211 sq ft (Excluding Bin Store and Garage)
 Garage = 28 sq m / 301 sq ft



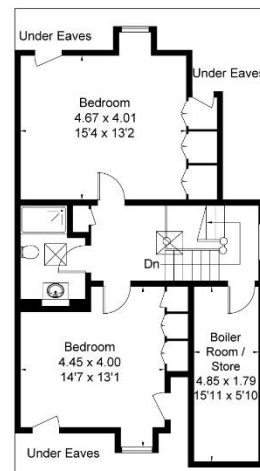
Ground Floor



Upper Ground Floor

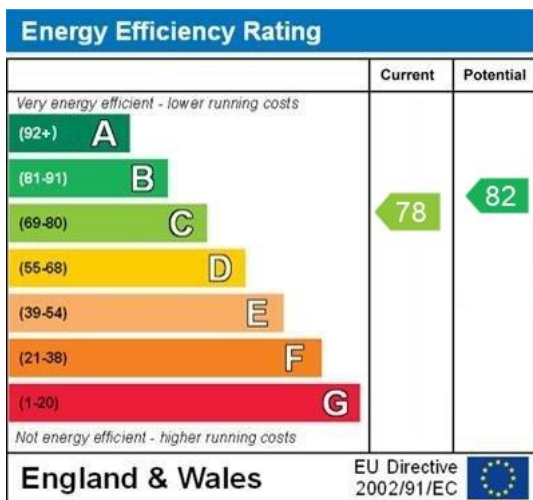


First Floor



Second Floor

Drawn for illustration and identification purposes only by fourwalls-group.com 61432



KERSHAW'S

