



Old Morden Grange, Kidbrooke Grove SE3

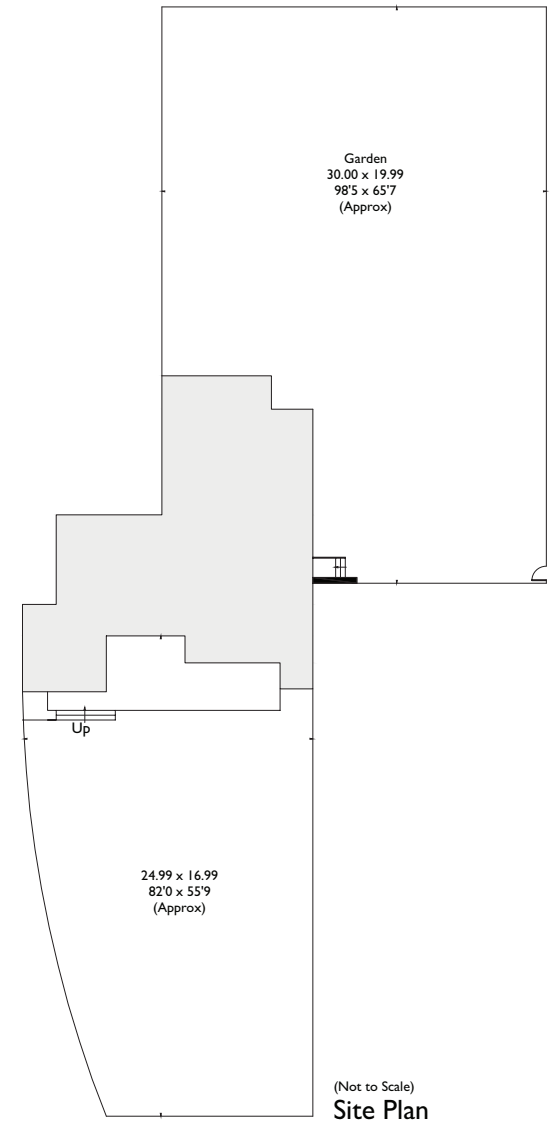
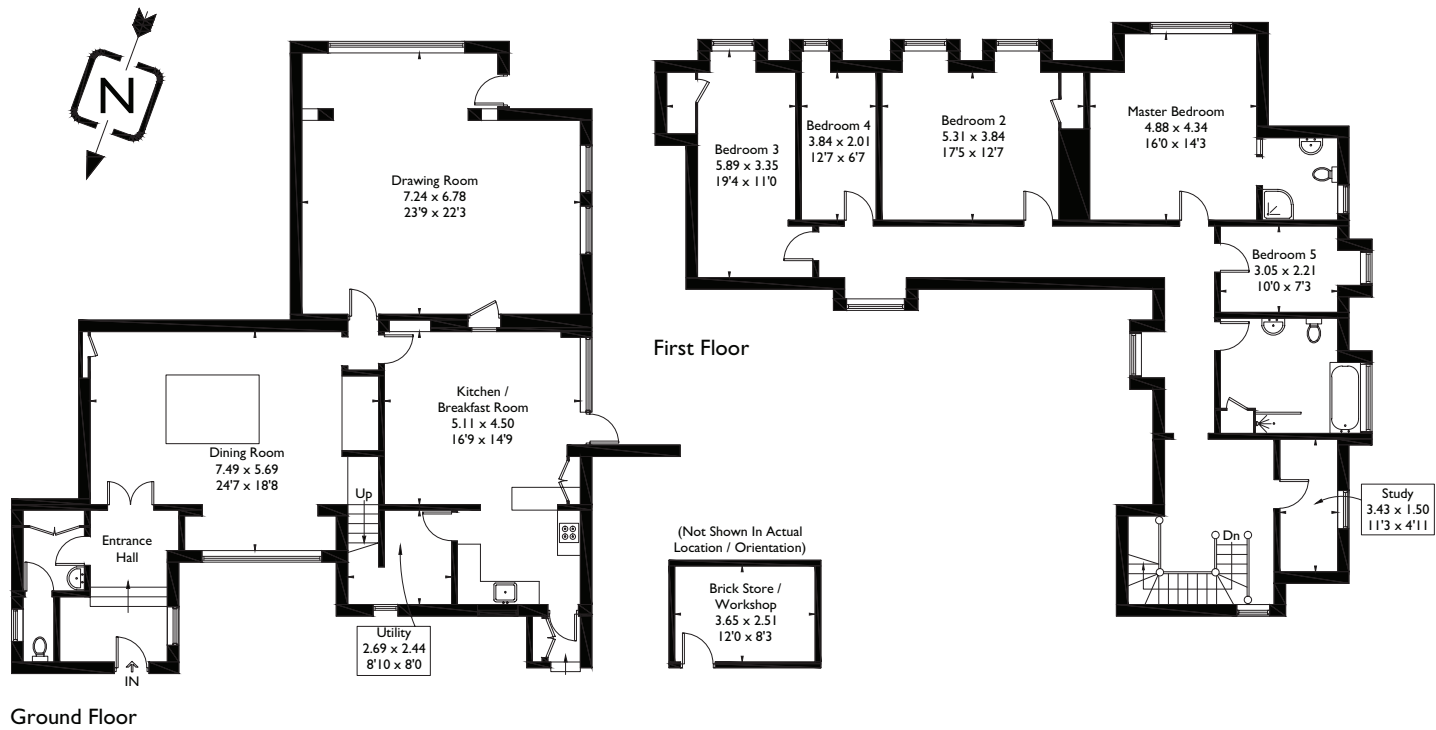
Tucked away in a secluded lane is this imposing period residence designed by the distinguished architect John Belcher in 1888. The grand entrance with its large private sweeping drive and pillared stone entrance leads into the spacious and well proportioned interior. The house retains much original character charm and detail including stone window frames, oak panelling, some beautiful stone and oak floors, ornate cornicing, mouldings, panelled doors and open fireplaces. Kidbrooke Grove is a sought after wide tree lined no through road situated within a pleasant walk of the open Heath and Blackheath Village. Fast and frequent train service to the City, West End and Canary Wharf. Easy access to A2, M2, M25 road networks. The area is well served with schools in both the state and public sectors



- Entrance lobby
- Cloaks and boot room.
- Panelled dining room with lantern light
- Amazing double aspect drawing room
- Kitchen breakfast family room
- Study
- Master bedroom and En- suite Shower room
- Four further bedrooms
- Large luxury family bathroom
- Lovely Gardens on three sides
- Parking for at least 10 cars
- Brick store



Approximate Gross Internal Area
 House = 278.7 sq m / 3000 sq ft
 Brick Store / Workshop = 9.2 sq m / 99 sq ft



Kershaws .eu
MOVING
 020 8297 2922
 www.kershaws.eu

37 Montpelier Vale,
 London SE3 0TJ

The mention of any appliances and/or services within these sales particulars does not imply they are in full and efficient working order. Reference to the tenure and boundaries of the property are based upon information provided by the vendor. Whilst we endeavour to make our sales particulars as accurate as possible, if there is any point which is of particular importance to you, please contact the office and we will be pleased to check the information. Do so particularly if contemplating travelling some distance to view the property.
 VIEWING ARRANGEMENTS STRICTLY THROUGH KERSHAW'S ON 0208 297 2922