



Broad Walk London SE3 £650,000 Freehold

Extremely spacious 1930's Semi-Detached Family home situated on this sought after residential road overlooking open playing fields. Being sold for the first time in many years, the house has been extended and offers great scope for further extension and modernisation. Lovely 90' garden with summer house/office. Four Bedrooms, Through Reception Room, Conservatory, Large Kitchen, Cloakroom, and Integral Garage. Off street parking to front drive.

Broad Walk is within a short distance to Shooters Hill area with its shops but also within easy reach of Kidbrooke Village and Blackheath Village. Excellent transport links are within easy reach including mainline railway, underground at North Greenwich and many local bus routes. The green spaces nearby include Blackheath, Shrewsbury Park and Oxleas Wood with Severndroog Castle beyond.

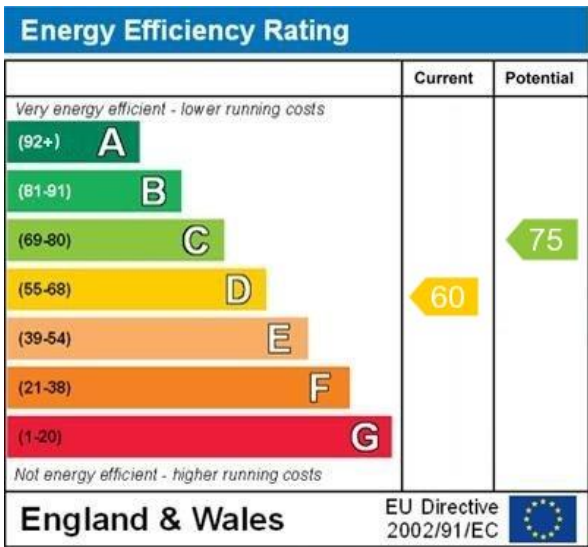
KERSHAW'S



KERSHAW'S



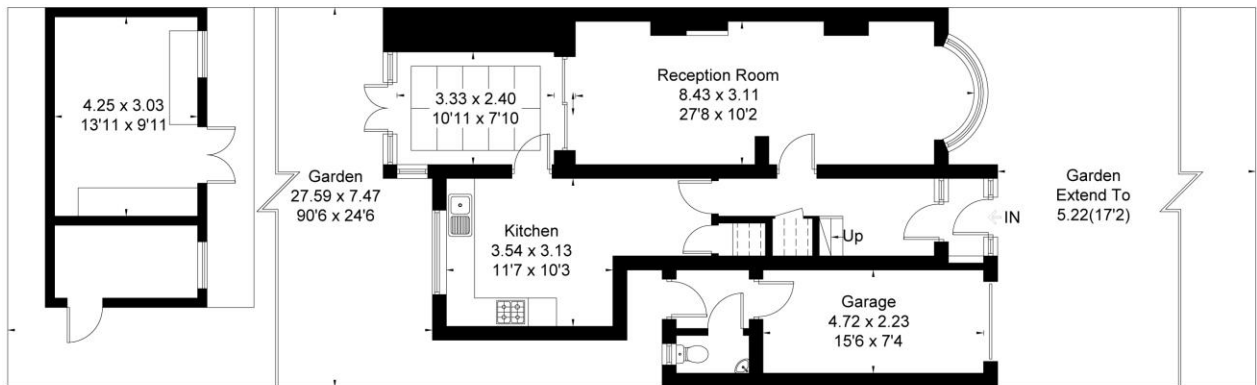
KERSHAW'S



Approximate Area = 117.8 sq m / 1268 sq ft
Outbuildings = 32.2 sq m / 347 sq ft
Total = 150 sq m / 1615 sq ft
Including Limited Use Area (2.3 sq m / 25 sq ft)



First Floor



Ground Floor

Surveyed and drawn in accordance with the International Property Measurement Standards (IPMS 2: Residential)
fourwalls-group.com 59707