



Algernon Road London SE13 **£2,200 pcm**

Mid Terraced period house located in an excellent position for commuting to London with Lewisham DLR and Mainline (Zone 2) station within a short walk. Offered unfurnished with spacious and light interior of three bedrooms, through reception room, dining room, kitchen and ground floor bathroom. Gas central heating. Pretty garden with table chairs and umbrella. Lewisham Town Centre is also a short walk away. Not suitable for sharers.

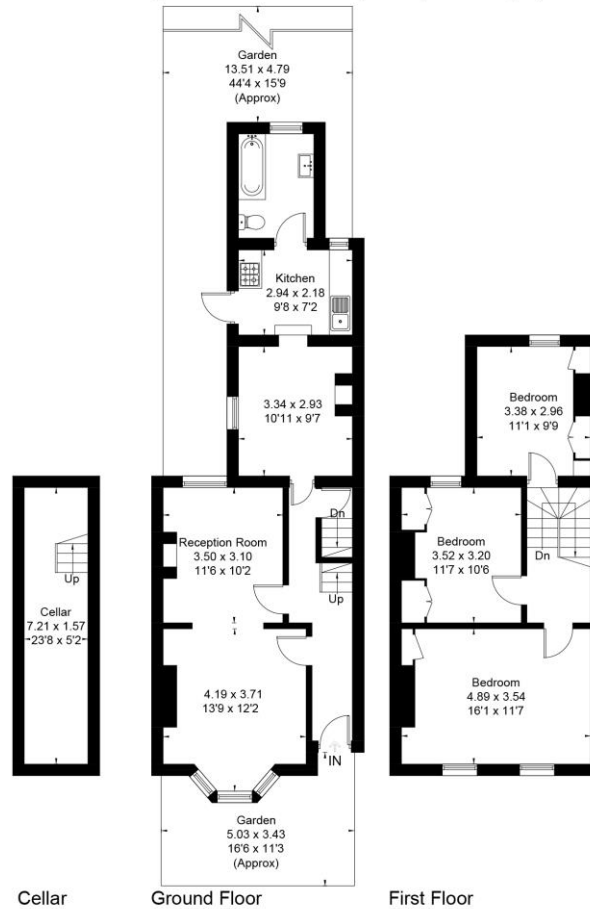
KERSHAW'S



KERSHAW'S



Approximate Area = 105.8 sq m / 1139 sq ft
 Cellar = 11.7 sq m / 126 sq ft
 Total = 117.5 sq m / 1265 sq ft
 Including Limited Use Area (0.5 sq m / 5 sq ft)



Surveyed and drawn in accordance with the International Property Measurement Standards (IPMS 2: Residential)
 fourwalls-group.com 59515

