



Braddyll Street Greenwich SE10 **£795,000 Freehold**

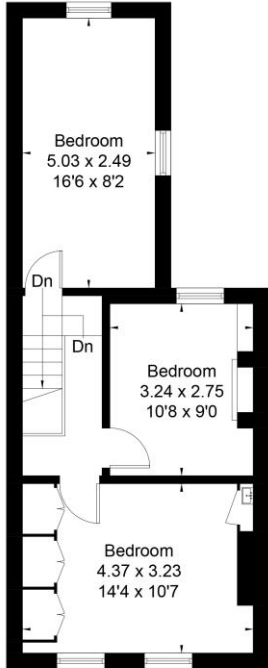
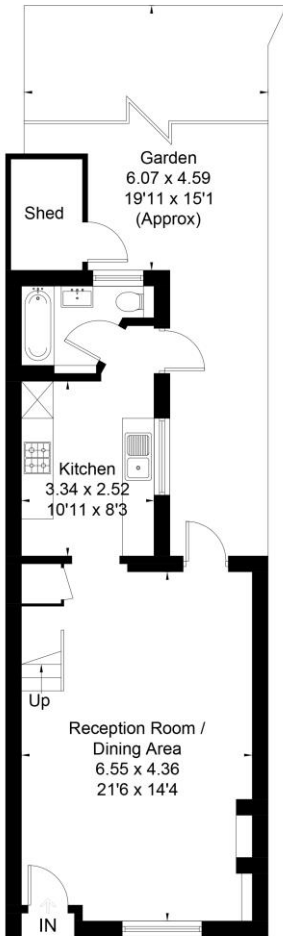
Delightful end of terrace period house located in this sought after Conservation area of Greenwich. Set over two floors with over 900 sq.ft. of space there are three bedrooms, an open plan through Living Room, Kitchen and Bathroom. Potential to extend. Superb position with a few minutes walk of Maze Hill Station and Greenwich Park, with the town centre being close by. Many bus routes serve Trafalgar Road providing access to North Greenwich and the DLR.

KERSHAW'S



KERSHAW'S

Approximate Area = 84.2 sq m / 906 sq ft
(Excluding Shed)



Surveyed and drawn in accordance with the International Property Measurement Standards (IPMS 2: Residential)
fourwalls-group.com 54946

