



Clayton Mews £1.2 Million Freehold

CHAIN FREE. Immaculately presented and extended two storey house set on the end of a terrace in this small extremely private courtyard mews located off one of the most sought after roads in West Greenwich. The house is situated in the desirable western part of Greenwich. Hyde Vale is a picturesque residential road which runs up from Royal Hill with its charming shops and pubs, towards Blackheath. The property is located within moments of Greenwich Park and in close walking distance to both Greenwich and Blackheath Village, with the independent shops, bars and restaurants that the area has to offer. Greenwich station and the DLR are within an easy walk providing access to the City, Canary Wharf and West End.

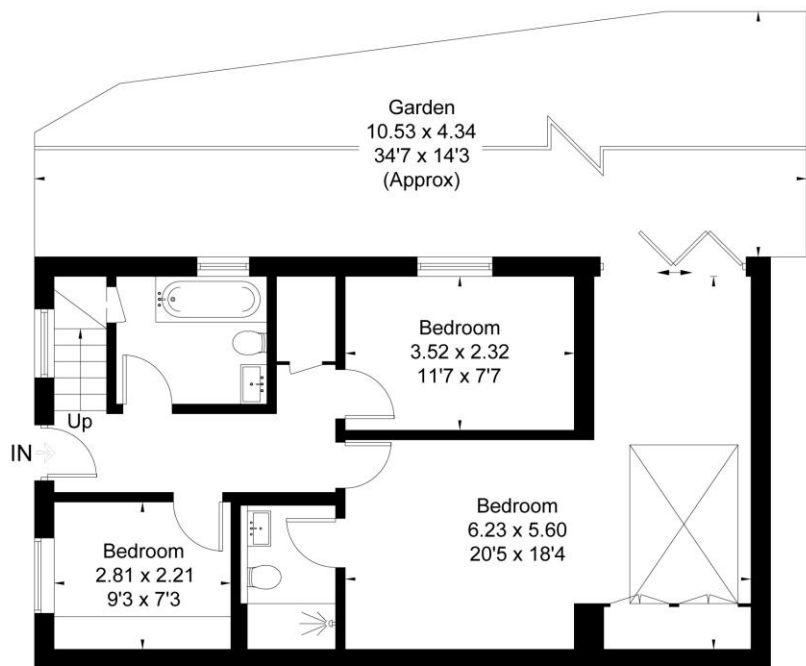
KERSHAW'S

Having the benefit of upstairs living space with a large vaulted reception room and bi-folds onto a large burnt cedar decked terrace, which becomes an additional room for the summer months. Contemporary white fitted kitchen with Bosch and Neff appliances and new American Fridge/Freezer. To the Ground Floor is the large extended L shaped Master Bedroom with bi folds onto the secluded garden and recent porcelain tiled Ensuite. Two further bedrooms and stylish bathroom. The third bedroom is currently used as a Dressing Room, but the fittings can easily be removed if a third bedroom is required. Private residents parking in the mews. Gorgeous courtyard garden covered to provide indoor/outdoor space which is beautifully planted to create a haven of tranquillity.

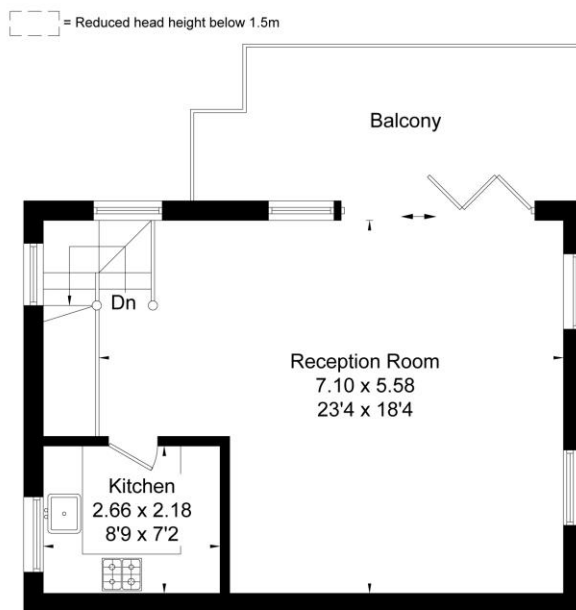


KERSHAW'S

Approximate Area = 107.5 sq m / 1157 sq ft
 Including Limited Use Area (2.0 sq m / 21 sq ft)
 Balcony = 13.1 sq m / 141 sq ft



Ground Floor



First Floor

Surveyed and drawn in accordance with the International Property Measurement Standards (IPMS 2: Residential)
 fourwalls-group.com 884911

