



Dartmouth Terrace £1,100,000 Share of Freehold

Bright and extremely spacious garden apartment with private entrance and direct access to the lovely large garden. Located in an enviable position directly facing the open heath and a short walk across to Blackheath Village, with its array of shops, cafes, restaurants and mainline station. Lewisham station and DLR are also within easy walking distance as is Royal Greenwich Park. Amazing interior, neutrally decorated and offering 1599 sq ft / 148.6 sq m of space. Lovely Entrance Reception Hall, Large open plan Living Dining and Kitchen that opens directly to the lovely garden at the rear. Four bedrooms and three bathrooms, two of which are en-suite. Laundry Room and large enclosed Entrance porch.

KERSHAW'S

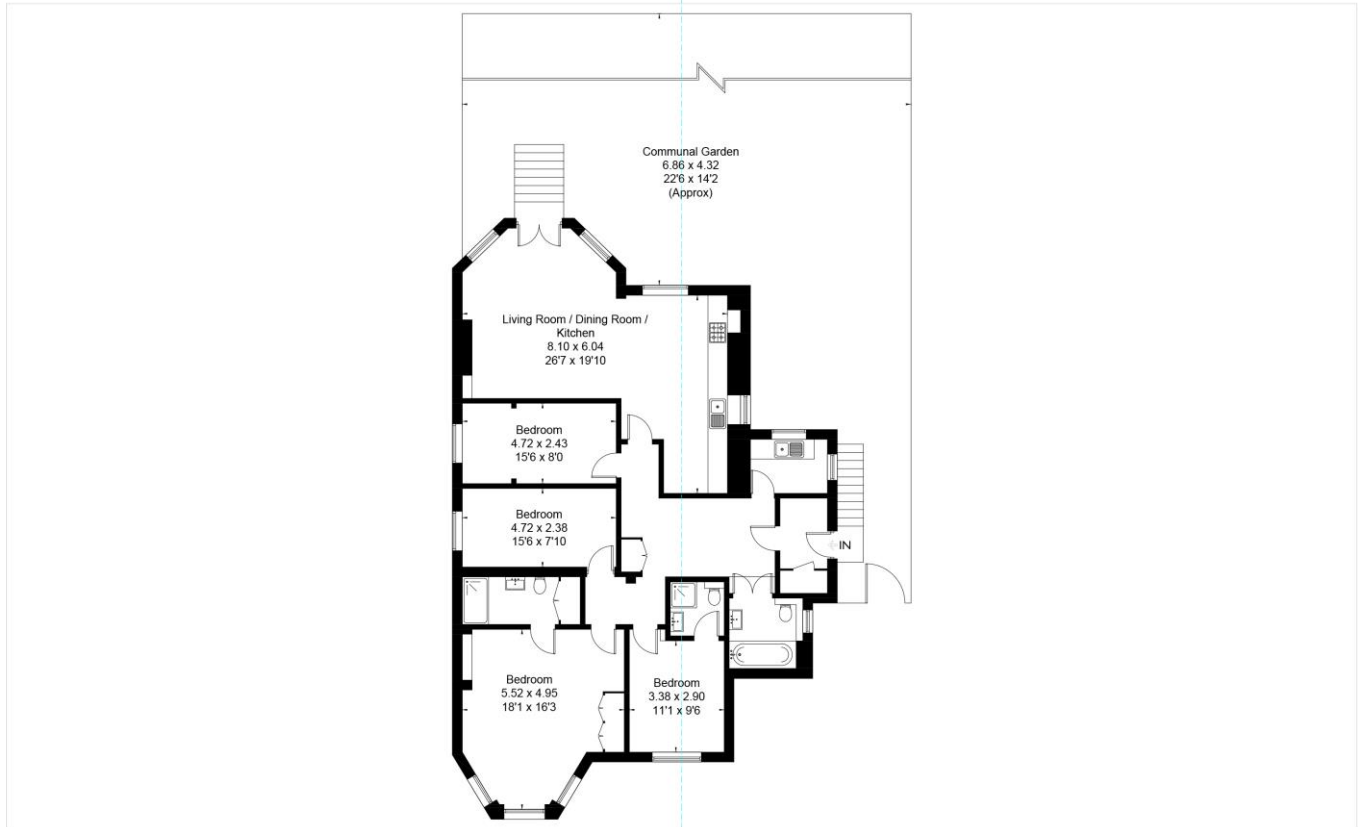


KERSHAW'S

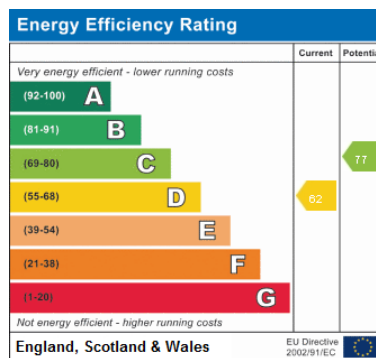


KERSHAW'S

Approximate Area = 148.6 sq m / 1599 sq ft
Including Limited Use Area (1.7 sq m / 18 sq ft)



Surveyed and drawn in accordance with the International Property Measurement Standards (IPMS 2: Residential)
fourwalls-group.com 292362



Lease 163 years
Service charge £132 per month
Building insurance £976 per annum