



Camden Row, Blackheath Guide price **£1,600,000 Freehold**

Stunning Period home situated in the sought-after quiet no-through road of Camden Row, a stone's throw from the open heath and all the amenities of Blackheath Village. With a sleek contemporary interior, this end of terrace house is unique and boasts the largest south-facing garden in the street and draws in natural light and vistas of the village through its clever use of glass throughout.

KERSHAW'S



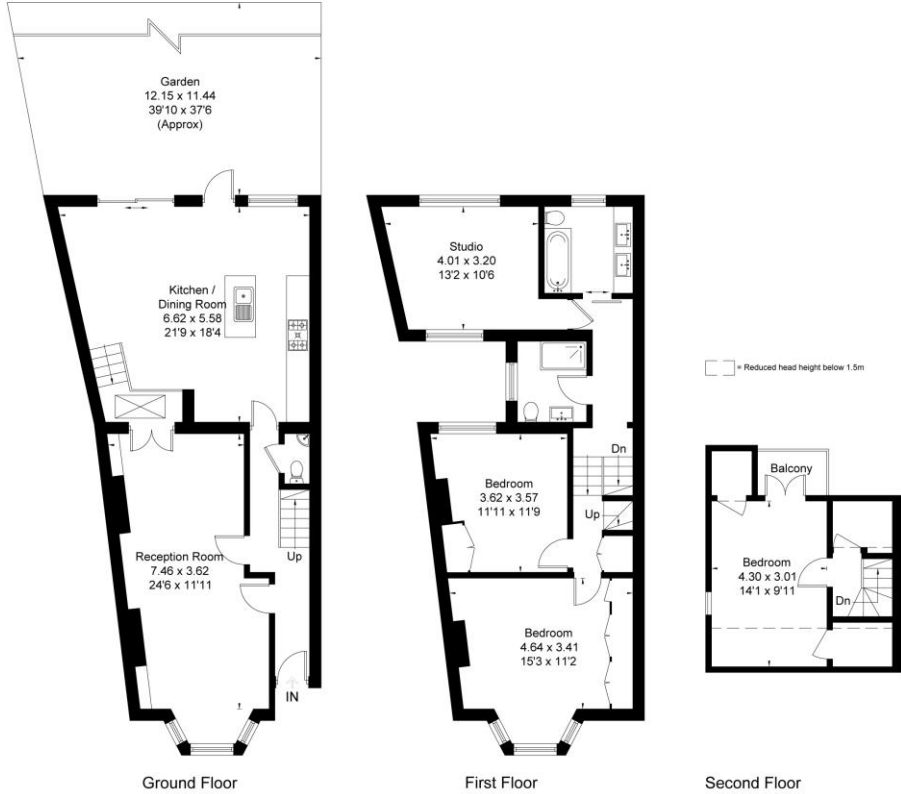
KERSHAW'S

The house was completely taken back to the brickwork in 2011, extended, fully refurbished and redesigned including loft extension and roof, rewiring, replumbing, cat 5 cabling, new leadwork and windows to the studio and bi-fold doors to the kitchen diner, refitting of bathrooms, installation of a cloakroom and refitting of kitchen and custom-built units. Finished in a neutral décor with incredible light being captured throughout the house. The south facing Mediterranean style garden has also been extended providing a secluded and sunny dining terrace and lawned garden beyond with the benefit of rear access to Southvale Road. Comprising four Bedrooms – Family Bathroom – generous Shower Room – Cloakroom – Through Reception Room – large family Kitchen Dining Room opening to the terrace and garden beyond.



KERSHAW'S

Approximate Area = 155.7 sq m / 1676 sq ft
Including Limited Use Area (7.8 sq m / 84 sq ft)



Surveyed and drawn in accordance with the International Property Measurement Standards (IPMS 2: Residential)
fourwalls-group.com 764615

