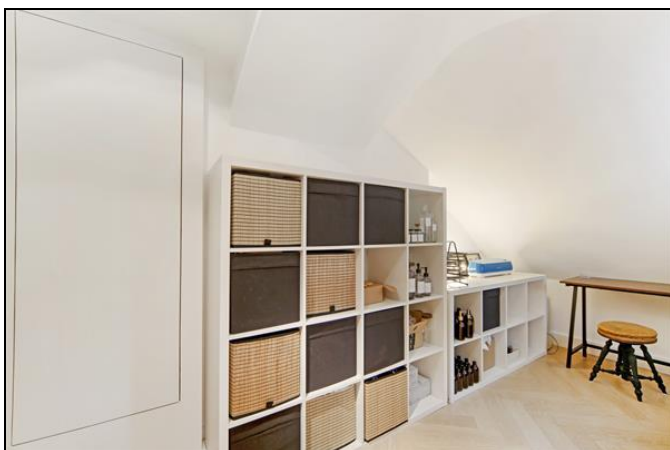




Eliot Hill £650,000 Leasehold

Remodelled, refurbished and beautifully decorated apartment with its own private garden set in a Victorian villa just off the Heath. Completely restored by the current owner with spacious and well appointed interior having a sleek white kitchen with marble tops, open plan living room with open fireplace and original shutters, raised dining area, period style cast iron radiators, two double bedrooms, lovely tiled bathroom with sleek modern suite, laundry room/pantry and a separate storage room plus a studio room making an ideal workspace or additional guest bedroom. The garden has been completely redesigned and densely planted with screened lawn and dining/sun terrace. Located within a few minutes walk of the open heath and zone 2 mainline station and DLR.

KERSHAW'S

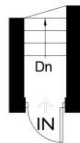


KERSHAW'S

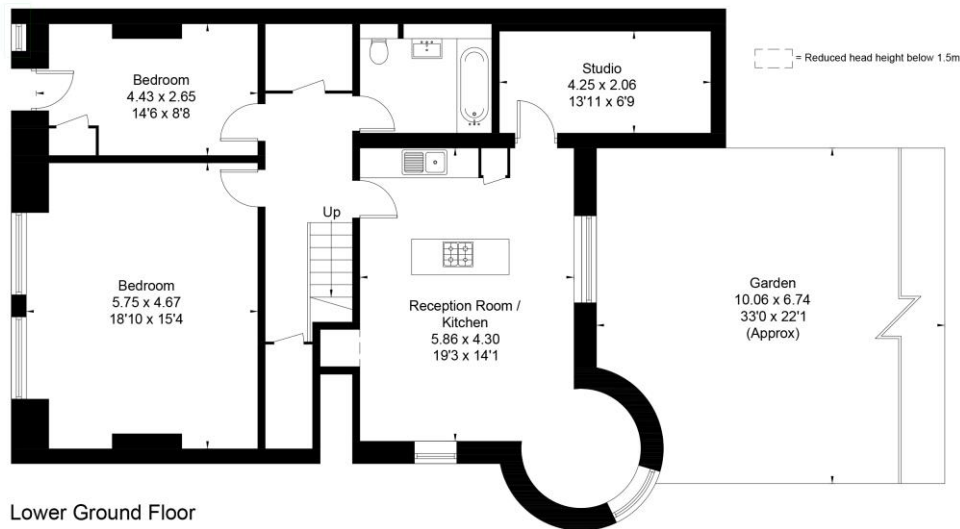


999 year lease plus share of freehold Ground Rent £1 pa.
Service Charge approx. £4600 pa. (Which will reduce).

Approximate Area = 100.8 sq m / 1085 sq ft
Including Limited Use Area (0.6 sq m / 6 sq ft)



Ground Floor



Lower Ground Floor

Surveyed and drawn in accordance with the International Property Measurement Standards (IPMS 2: Residential)
fourwalls-group.com 751029