

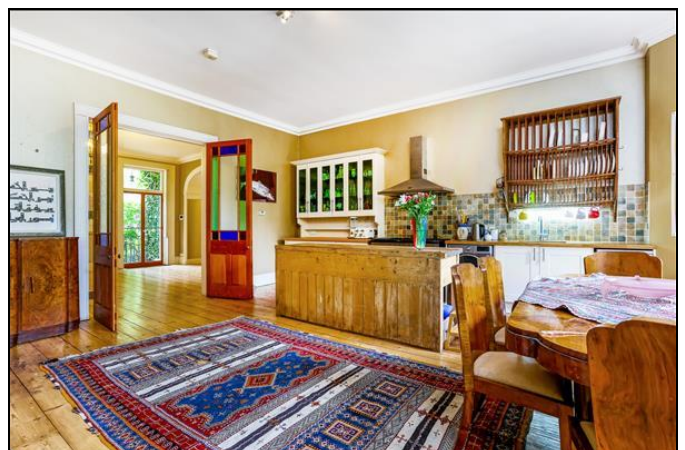
KERSHAW'S



Hall Floor Apartment, Durlstone Manor, Champion Hill **£3,500 per month, all inclusive**

All utilities, council tax, wi-fi, a gardener and housekeeping once a week are included in the rental of this beautiful Hall Floor Apartment. Spanning some 1300 sq.ft. of principal accommodation in this incredible Manor House located behind secure gates in beautiful grounds in a sought after road. Much period detail including high ceilings with decorative cornicing - beautiful fireplaces - doors - mouldings and original flooring go to making this one very special and unique apartment. Private entrance to Living Room - huge Dining Kitchen Room with all new appliances. Two huge bedrooms and a luxurious new marble bathroom. Share of the walled rear garden and one parking space. There is some furniture and art decorating the walls. Few minutes walk to Denmark Hill BR and overground station.

KERSHAW'S



Security gates from the road leading through to a brick paved driveway, steps lead up to a beautiful porticoed private entrance with video entry phone.
Entrance door opening into the living room.

Living Room

Elegant room with French windows to the front and having working shutters. and, boxed architraving. Ceiling cornice and skirtings. Beautiful marble fireplace (decorative feature only), curved feature wall with plaster fresco, stripped and sealed wide floor boards, high ceiling with chandelier, art is hung on the walls. Beautiful mirror above the fireplace.

Double doors with inset stain glass open onto another beautiful elegant room:

Kitchen/ Dining Room

Set at the rear of the house this stunning room has a curved wall with two full height sash windows set overlooking the garden. Wood burner stove (decorative purposes only). All appliances are brand new and include a Rangemaster range cooker, a Rangemaster American style Fridge/freezer, washer/dryer and dishwasher. A lovely country style kitchen with dressers, plate racks butcher block and storage. Dining table and chairs. From the living Room is a solid wood door leading into an inner lobby with new fitted carpet leading to the bedrooms and bathrooms.

Bedroom One

At the rear of the house, full height windows and doors, having working shutters and central doors opening onto a balcony and a small staircase leading down to the garden. Extremely high ceiling and triple ceiling cornice, deep skirtings, new fitted carpet, marble fire surround with open fireplace (for decorative purposes only).

Bedroom Two

Full height windows with cathedral top and doors opening onto decorative wrought iron Juliette balcony, high ceiling with double cornice deep skirtings, range of custom-built full height cupboards, wardrobes and top storage cupboards, new fitted carpet.

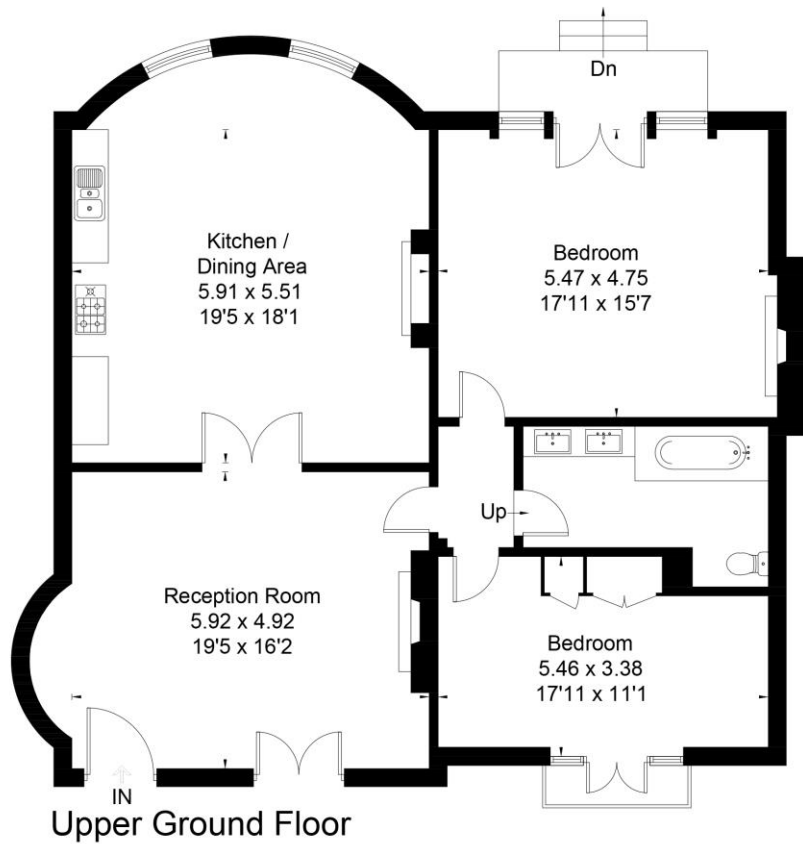
Bathroom

Newly fitted luxury bathroom, white with chrome fittings, contrasting grey and marble tiling, deep double ended bath with fixed rain head shower and hand shower, W.C with bidet washing facility, his and hers twin wide wash hand basins set into a marble top, with ample storage drawers under. Huge full size mirror, heated towel rail / radiator, shaver socket, extractor fan, underfloor heating.

Exterior

Use of the beautiful and very large mature walled rear garden. Parking to front driveway for one car.

Approximate Area = 127.2 sq m / 1369 sq ft



Surveyed and drawn in accordance with the International Property Measurement Standards (IPMS 2: Residential)
fourwalls-group.com 257874