



## Ringwood Court, 24 Kidbrooke Grove Blackheath SE3 **£1,850 per month**

A lovely bright and spacious two bedroom apartment on the raised hall floor of a grand period house on Kidbrooke Grove. Kidbrooke Grove is a wide, tree lined and quiet no through road just a stone's throw from the open Heath and a short walk to Blackheath BR station and Village with its vast selection of restaurants, bars, pubs, cafes and boutiques. The flat is decorated in modern neutral tones with stripped and polished wooden floors throughout. Huge communal garden and ample residents parking outside.

# KERSHAW'S



## Entrance

Large front garden laid to lawn and planted with mature shrubs. Steps up to double communal entrance door. Opens onto spacious and bright communal entrance hall.

## Private Entrance

Private panelled door opening onto hallway with two steps down to bathroom and four steps up to two double bedrooms. Bespoke fitted cupboards and shelving unit. Large multi paned casement window overlooking the rear and box sash window to the side. Stripped and polished wooden flooring.

## Open Plan Sitting/Dining Room/Kitchen

Huge room with high ceilings, double height skirtings, picture rail, ceiling rose and ornate decorative coving. Stripped and polished wooden flooring. Huge bay window with box sash windows and fitted and lined curtains. Two wall mounted radiators. Open fireplace with white surround and tiled inset and hearth. Wall mounted bracket for TV. Sockets for WiFi and telephone.

## Kitchen

Fitted in a range of wall and base units in white high gloss with chrome handles. Dark grey granite work surfaces and brick style white ceramic tiled splash backs. Integrated Neff dishwasher. concealed washer/dryer and free standing American style fridge freezer. Integrated AEG oven with inset four ring Induction hob. Stainless steel canopy extractor hood. Inset white ceramic basin and drainer with chrome mixer taps.

## Bathroom

Lovely large and sunny bathroom part tiled in brick style white ceramic tiles and dark grey slate tiled flooring. Modern white suite comprising roll top claw foot bath with large chrome mixer taps. Wall mounted chrome shower over the bath with large rain head shower. Concealed push flush low level WC. Wash hand basin with chrome mixer taps set into vanity unit. Wall mounted school style iron radiator with chrome heated towel rail surround. Fitted cupboard. Large double box sash window with opaque glass. Recessed low voltage down lights.

## Bedroom One

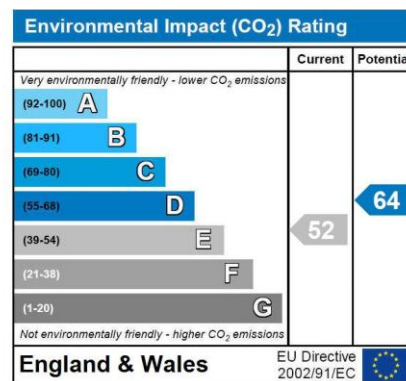
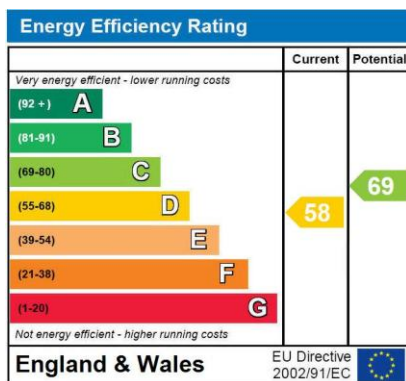
Set to the front of the apartment overlooking the front garden. Two large multipane casement windows with fitted roman blinds in beige. Triple wardrobe. Wall mounted radiator. Central ceiling rose and light fitting. Stripped and polished wooden floors. Skirtings.

## Bedroom Two

Set to the rear of the apartment overlooking the rear garden. Large triple multi paned casement window. Stripped and polished wooden floors. Wardrobe and fitted cupboard. Wall mounted radiator. Central ceiling light fitting. Skirtings.

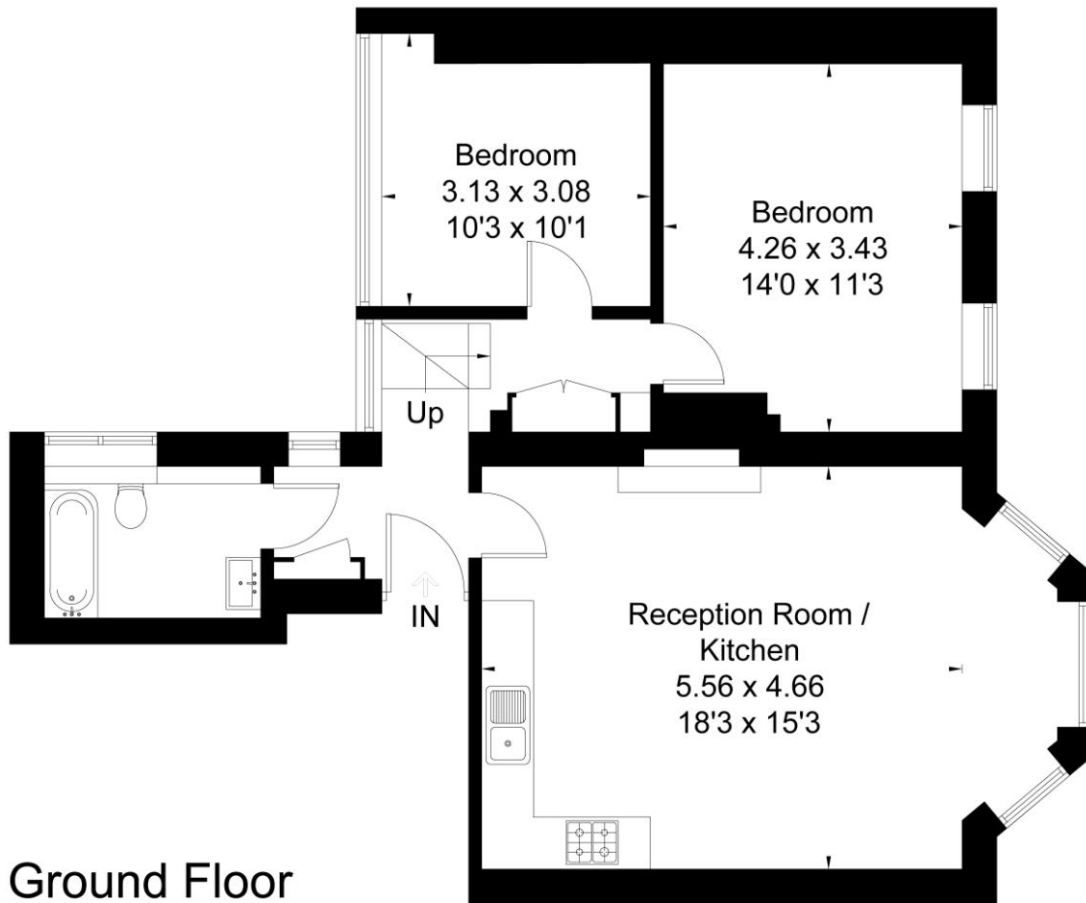
## Garden

Huge sunny rear communal garden laid to lawn with edges planted with mature shrubs and raised patio area to the rear.



The mention of any appliances and/or services within these sales particulars does not imply they are in full and efficient working order. Reference to the tenure and boundaries of the property are based upon information provided by the vendor. Whilst we endeavour to make our sales particulars as accurate as possible, if there is any point which is of particular importance to you, please contact the office and we will be pleased to check the information. Do so particularly if contemplating travelling some distance to view the property. VIEWING STRICTLY THROUGH KERSHAW'S ON 02082972922

Approximate Area = 70.5 sq m / 759 sq ft  
Including Limited Use Area 1.6 sq m / 17 sq ft)



## Ground Floor

Surveyed and drawn in accordance with the International Property Measurement Standards (IPMS 2: Residential)  
fourwalls-group.com 240232