



Viewpoint, Lee Park £1,600 Pcm

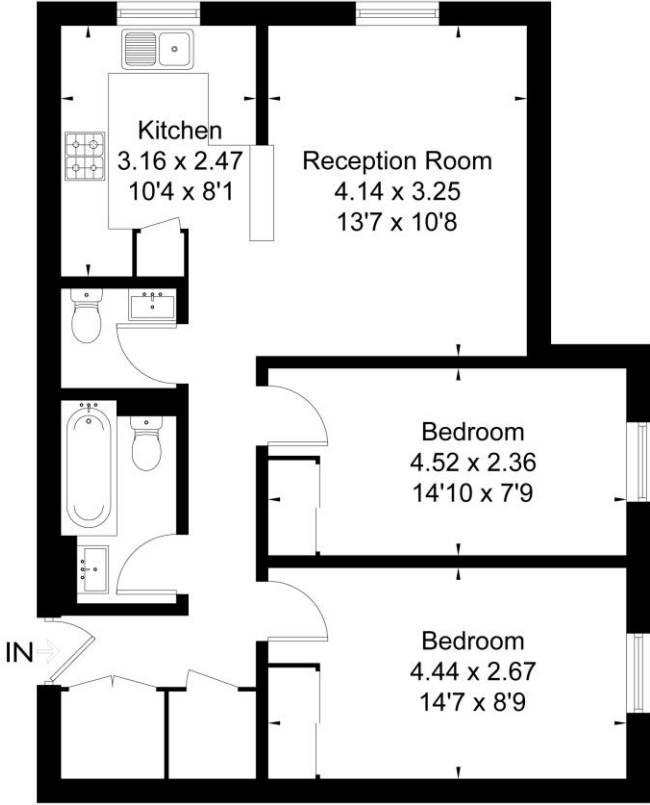
SECOND FLOOR APARTMENT LOCATED ON THE TOP OF THIS SMALL PURPOSE BUILT BLOCK SITUATED AT THE TOP OF BLACKHEATH VILLAGE A STONES THROW FROM THE STATION, SHOPS, BARS, RESTAURANTS AND CAFES. AVAILABLE FROM THE BEGINNING OF MAY THIS BRIGHT TWO DOUBLE BEDROOMED APARTMENT COMES FULLY FURNISHED AND EQUIPPED. OPEN PLAN LIVING AND KITCHEN, BATHROOM/WC AND SEPARATE WC. GAS CENTRAL HEATING. COMMUNAL GARDENS.

KERSHAW'S



KERSHAW'S

Approximate Area = 62.5 sq m / 673 sq ft
Including Limited Use Area (0.7 sq m / 7 sq ft)



Second Floor

Surveyed and drawn in accordance with the International Property Measurement Standards (IPMS 2: Residential)
fourwalls-group.com 296183

