



## **Granville Park London SE13 GUIDE PRICE £1 MILLION**

Stunning ground floor apartment in this most popular and sought after gated development located just off the open heath. Offering an incredible 2129 sq.ft. of space in beautiful condition and neutrally decorated throughout. Number One Granville Park is ideally situated for a pleasant walk to Blackheath Village with its array of shops, restaurants and bars and a short walk to Lewisham Zone 2 mainline station and DLR.

# KERSHAW'S



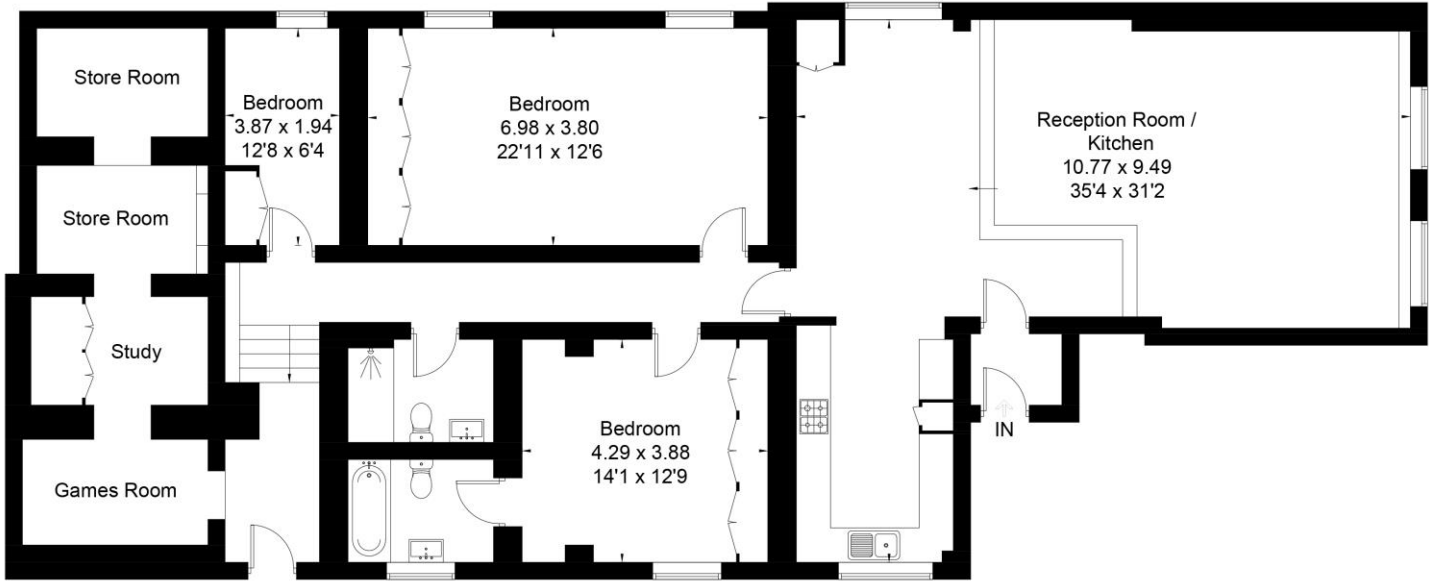
# KERSHAW'S

Spilt level and open plan Living Dining and superb fitted kitchen. Three Bedrooms, Two bathrooms (one ensuite) and a range of rooms offering a multitude of uses including studies, games room and store rooms. There is a separate rear entrance allowing for bikes to be easily stored and if working from home could be used as office entrance. Reserved parking space plus guest parking. Beautiful communal gardens on two levels and gated video entry. Plus a quarter share in a large garden storage shed.



# KERSHAW'S

Approximate Area = 197.8 sq m / 2129 sq ft  
Including Limited Use Area (3 sq m / 32 sq ft)



Ground Floor

Surveyed and drawn in accordance with the International Property Measurement Standards (IPMS 2: Residential)  
fourwalls-group.com 293109

