



## **Tranquil Vale, Blackheath Village** **£1,900 pcm**

**NEWLY RESTORED, REDESIGNED AND BEAUTIFULLY EQUIPPED GROUND FLOOR APARTMENT SET AT THE REAR OF THIS IMPOSING BUILDING THAT HAS JUST UNDERGONE TOTAL RENOVATION AND HOUSES THE NEW WELCOME ADDITIONS TO THE VILLAGE - SPACE NK AND BLACKHEATH YOGA. JUST A FEW MINUTES STROLL FROM ALL THE AMENITIES THE VILLAGE HAS TO OFFER, INCLUDING BARS RESTAURANTS CAFES SHOPS AND THE STATION PROVIDING A FAST AND FREQUENT SERVICE TO THE CITY, WEST END, VICTORIA AND A ONE STOP CHANGE TO DLR.**

Finished in high quality materials and fittings with bespoke fitted kitchen, two luxury shower rooms, solid floors, low voltage Internal LED spotlights throughout with a single feature external light fitting. Systemline with Bluetooth capability and new copper wiring throughout. New bespoke sash windows with original brass ironmongery. Industrial column radiators. Contemporary color pallet used throughout whilst retaining original features. 'Nest' thermostatic control with bluetooth capability.

## **Entrance**

Personal solid entrance door with deadlock and nightlock, opening into entrance hall with low voltage ceiling lighting.

Intercom system included with integrated speaker system. Engineered oak herringbone style flooring.

## **Kitchen/Dining/Living**

Walk through to open plan kitchen, dining, living room. Beautiful fitted kitchen in sleek grey units with Bosch appliances. Indesit washing and drying machine and Lamona wine fridge. Engineered oak herringbone style flooring. Wide angled bay window to the rear with doors to Juliet Balcony. (To be installed).

## **Nursery Bedroom**

Low voltage lighting, sash window to the rear, carpeted flooring.

## **Shower room**

Tiled in over sized Porcelain tiles, under floor heating. Shower cubicle, wash basin and w.c. Cupboard housing the Worcester Bosch Green Star rated combination boiler.

## **Bedroom 1**

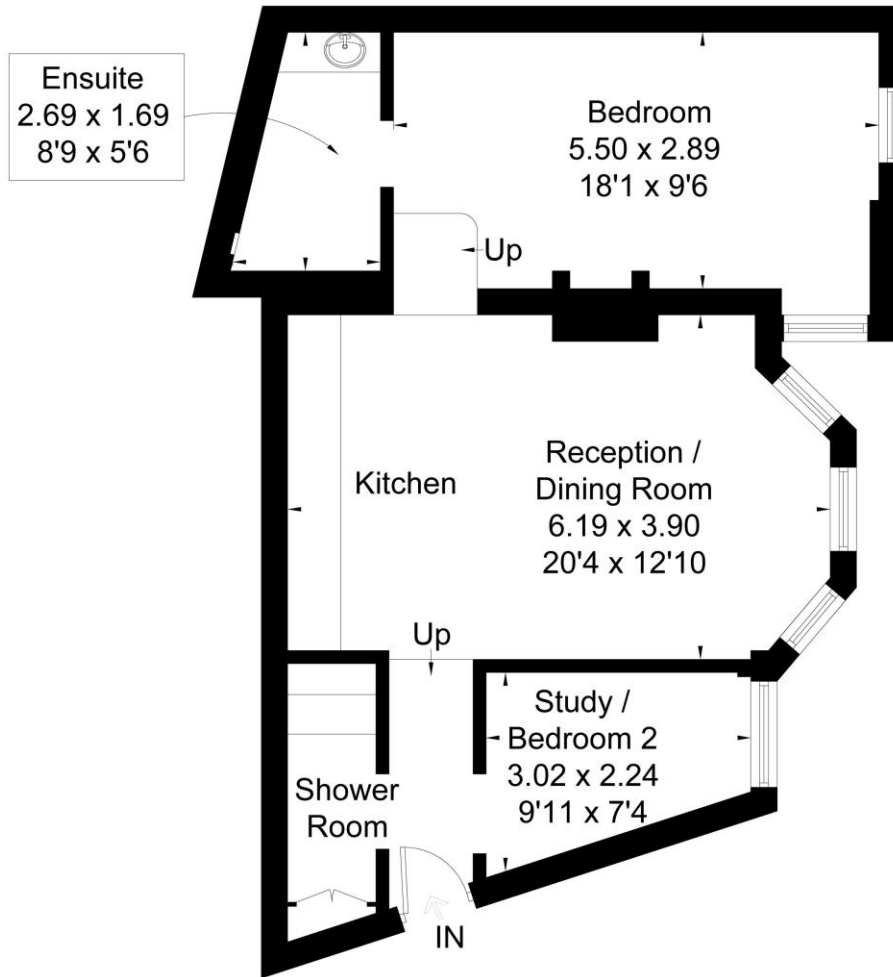
Sash window to the rear and additional casement window to the side, low voltage ceiling lighting. Carpeted flooring.

## **EnSuite Shower Room**

Over sized Porcelain tiles, underfloor heating. Circular stone wash hand basin, shower cubicle and w.c.



Approximate Area = 57.3 sq m / 617 sq ft



## Ground Floor

Surveyed and drawn in accordance with the International Property Measurement Standards (IPMS 2: Residential)  
fourwalls-group.com 252271